

- Abbey Park Plat No. 4 -

February, A. D., Nineteen Hundred Eighty Eight

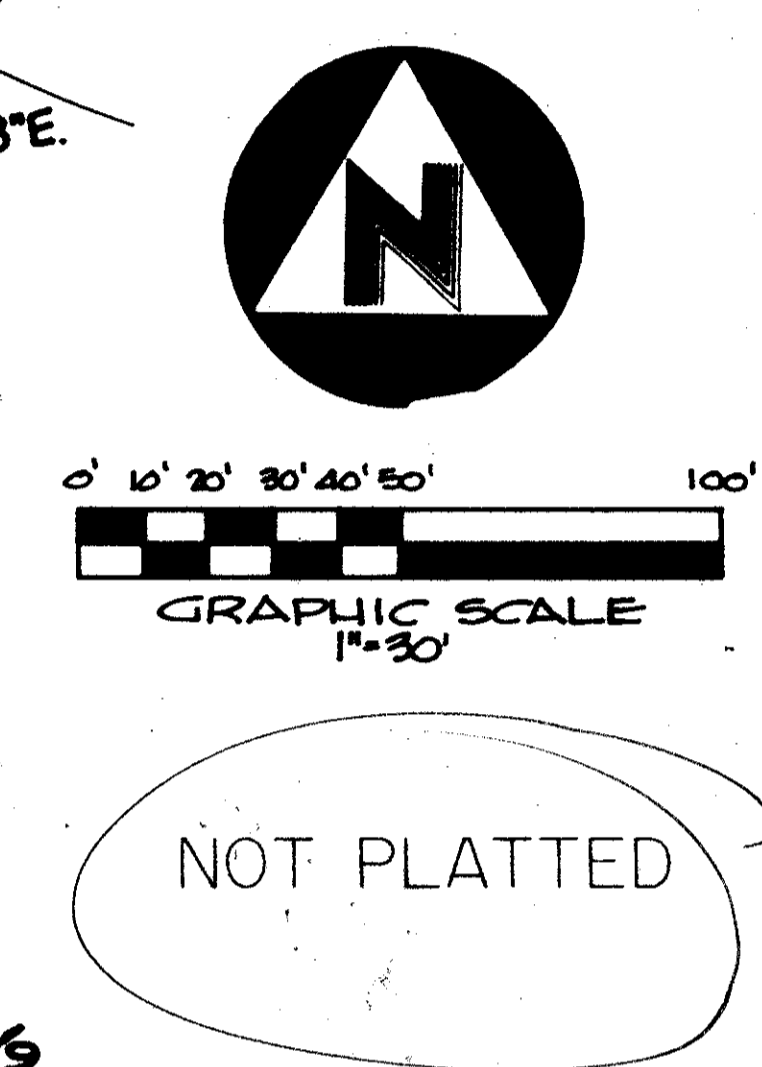
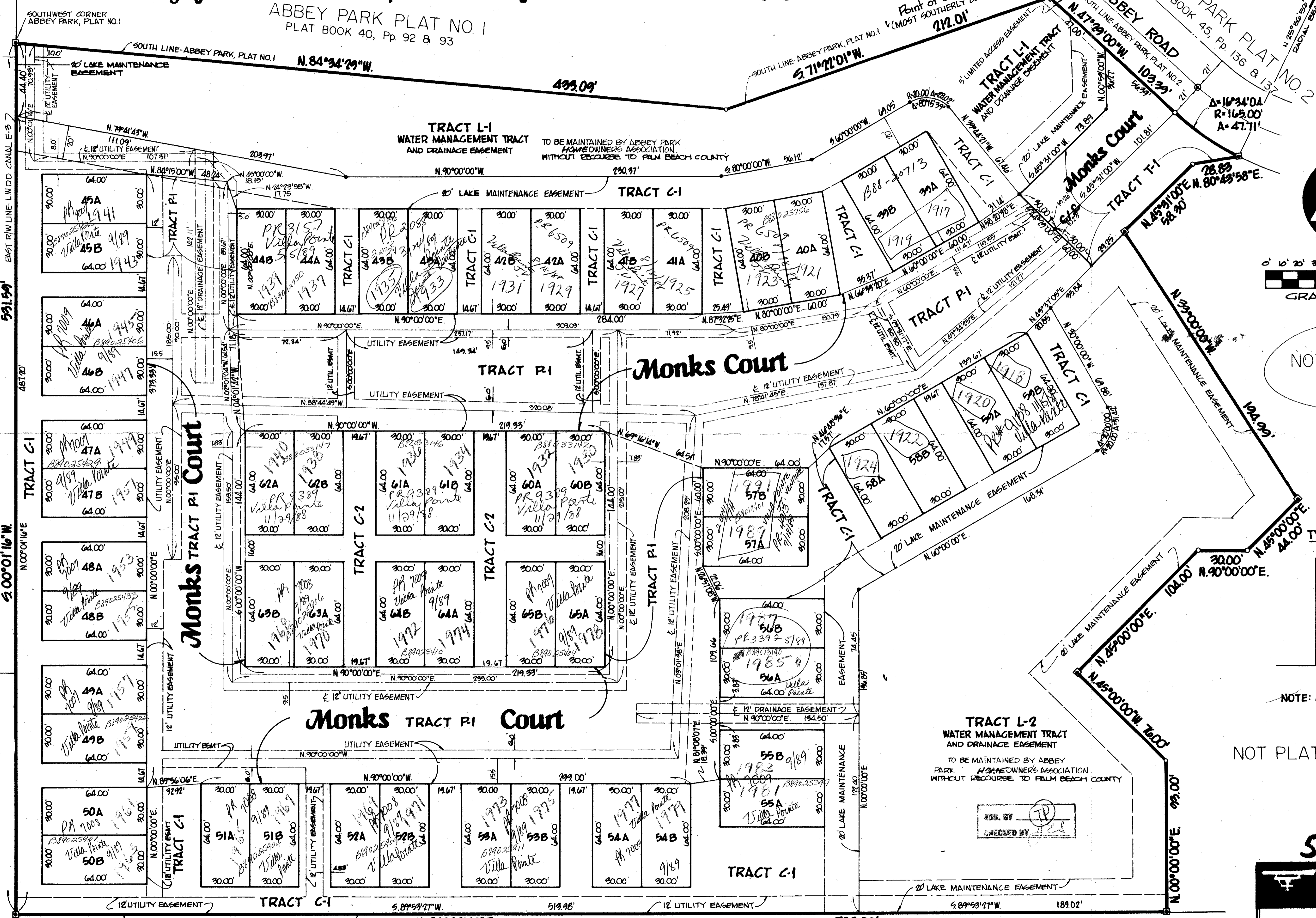
A Part Of Abbey Park, A Planned Unit Development
Lying On Section 11, Township 44 South, Range 42 East, Palm Beach County, Florida

ABBEY PARK PLAT NO. 1
PLAT BOOK 40, Pp 92 & 93

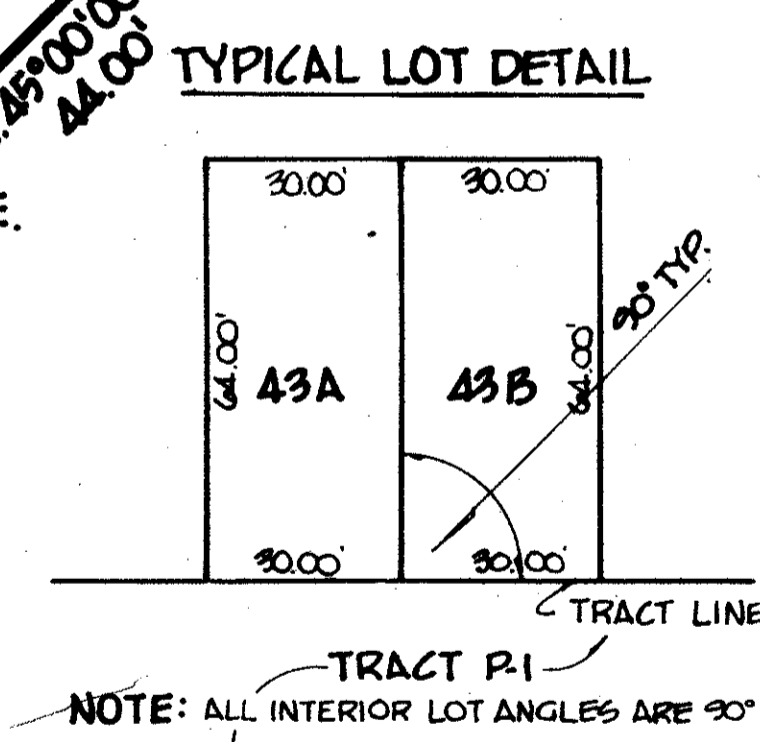
Sheet Two Of Two

135

State Of Florida)
County Of Palm Beach)
This Plat was filed for record at
this day of _____
A.D., 1988, and duly recorded in
Plat Book _____ on
Pages _____ through _____
John B. Dunkle,
Clerk of the Circuit Court.
By _____ Deputy Clerk



NOT PLATTED



NOT PLATTED

0190-004

59/135

BENCH MARK
land surveying and mapping, inc.
WEST PALM BEACH, FLORIDA

Record Plat
Abbey Park Plat No. 4

DESIGNED	DRAWN	CHECKED	JOB NO	DRAWING NO
			P-9500	
			FILE NO	SHEET OF
				2 2

NOTE: THE BUILDINGS CONSTRUCTED ON LOTS SHOWN HEREOU MUST MAINTAIN A MINIMUM SETBACK OF 15 FEET FROM BUILDING TO BUILDING.

This instrument was prepared by Wm. R. Van Campen, R.L.S., in and for the office of Bench Mark Land Surveying & Mapping, Inc., 4152 W. Blue Heron Boulevard, Suite 121, Riviera Beach, FL.

SUBDIVISION - Abbey Park #4
BOOK 59 PAGE 135
FLOOD ZONE B
QUAD # 32
SE RID 79-161
RUP NAME

TAZ 289

L.W.D.D. CANAL L-8
OFFICIAL RECORD BOOK 1792, PAGE 612

WEST LINE - SE. 1/4 - SEC. 11/44/48
OFFICIAL RECORD BOOK 1792, PAGE 612

SOUTH LINE - SE. 1/4 - SEC. 11/44/48
OFFICIAL RECORD BOOK 1792, PAGE 612

SOUTH 1/4 CORNER
SEC. 11/44/48

SOUTH LINE - SE. 1/4 - SEC. 11/44/48

L.W.D.D. CANAL L-8
OFFICIAL RECORD BOOK 1792, PAGE 612

210